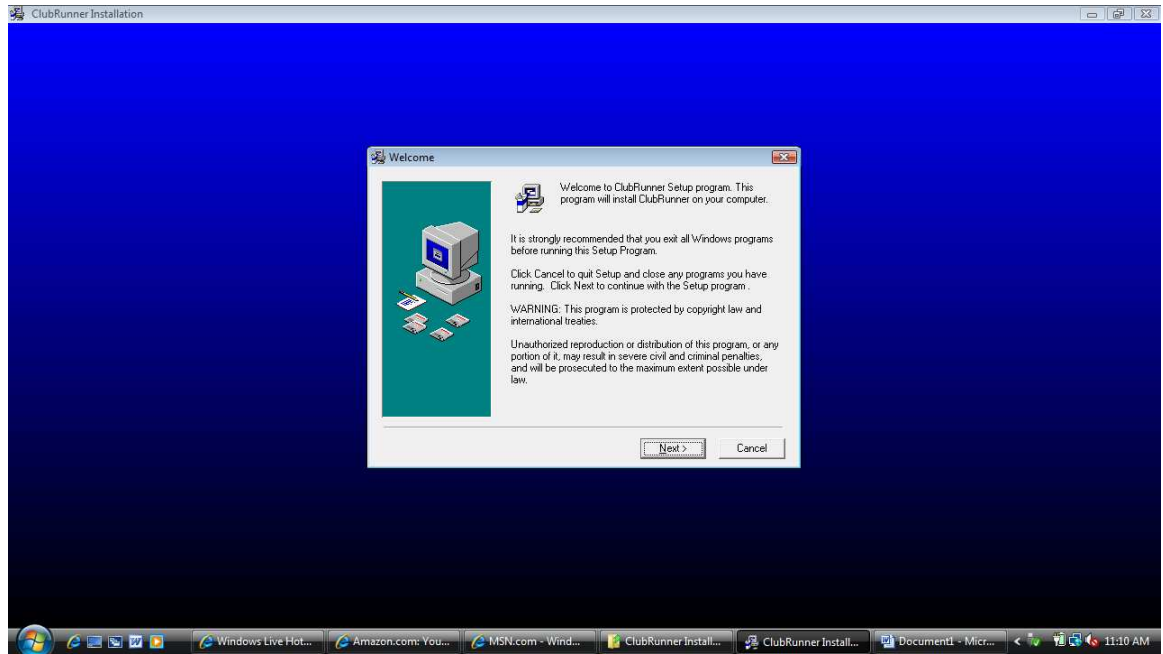
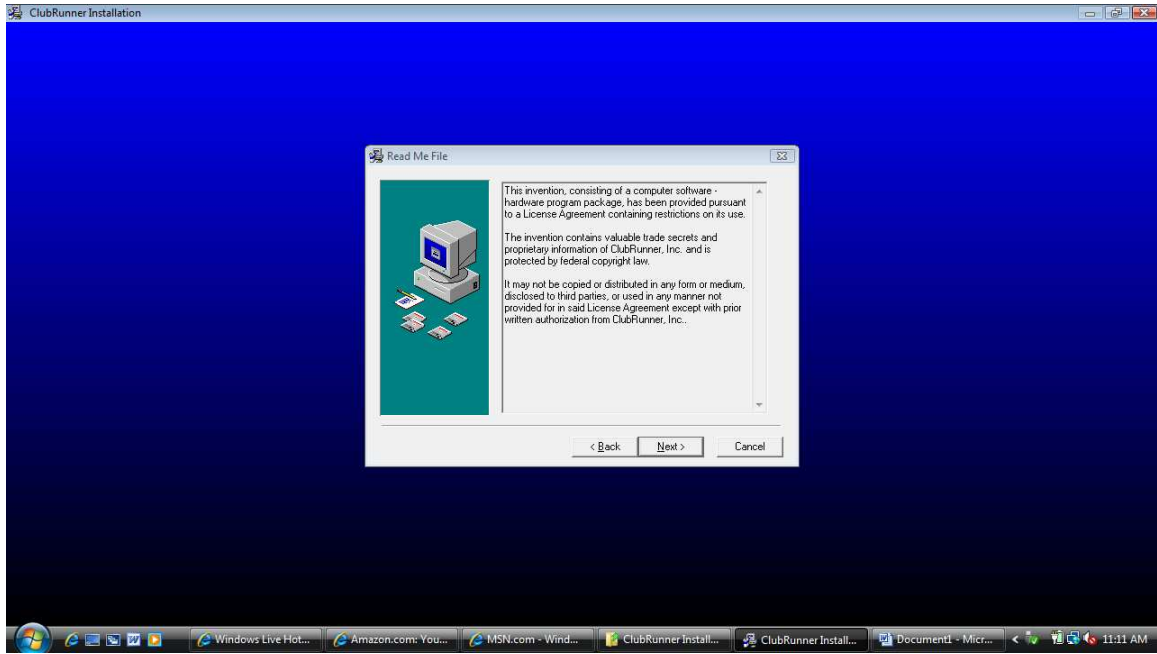


# Clubrunner Install Instructions

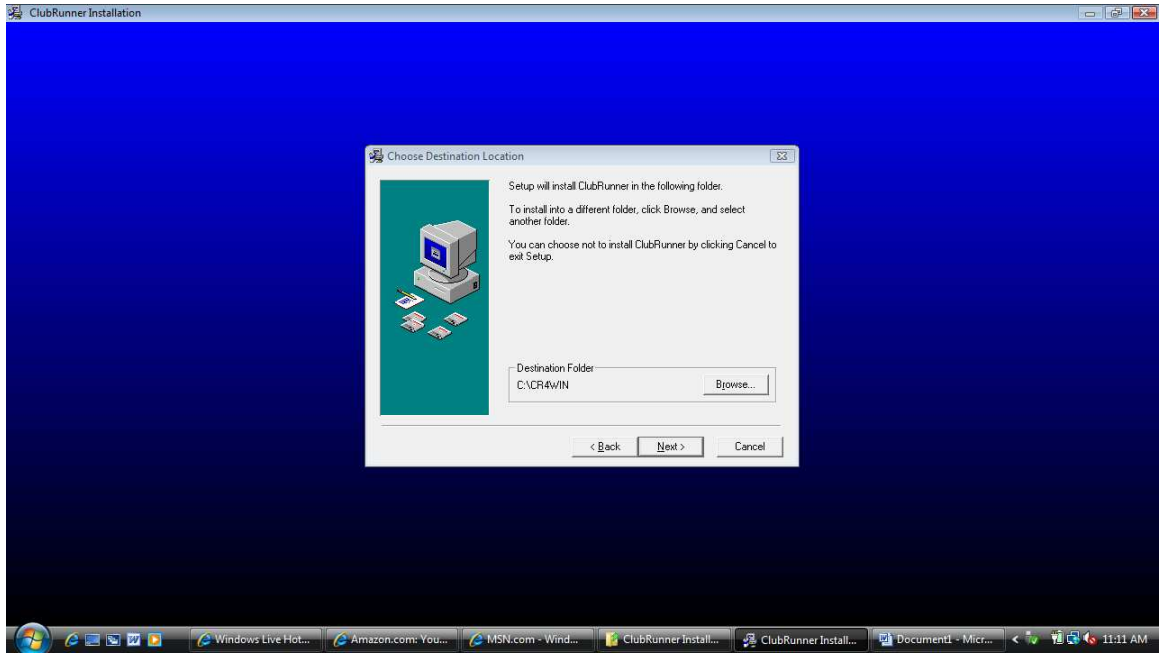
1. Run Setup from the Thumbdrive. Select Next.



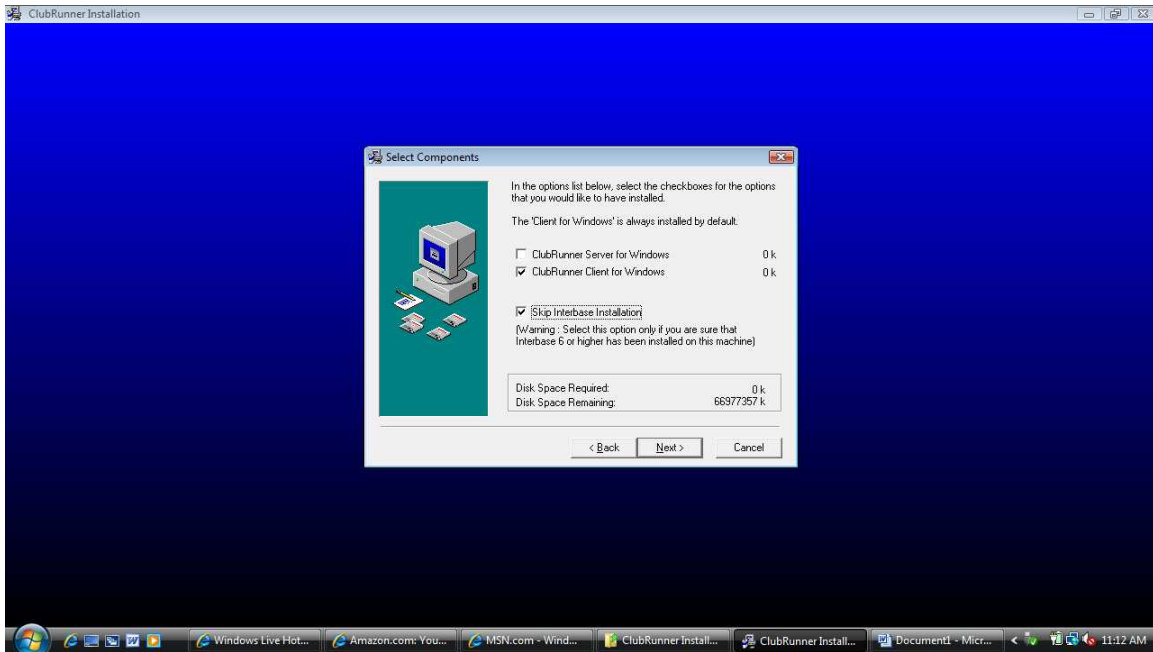
a. Select Next.



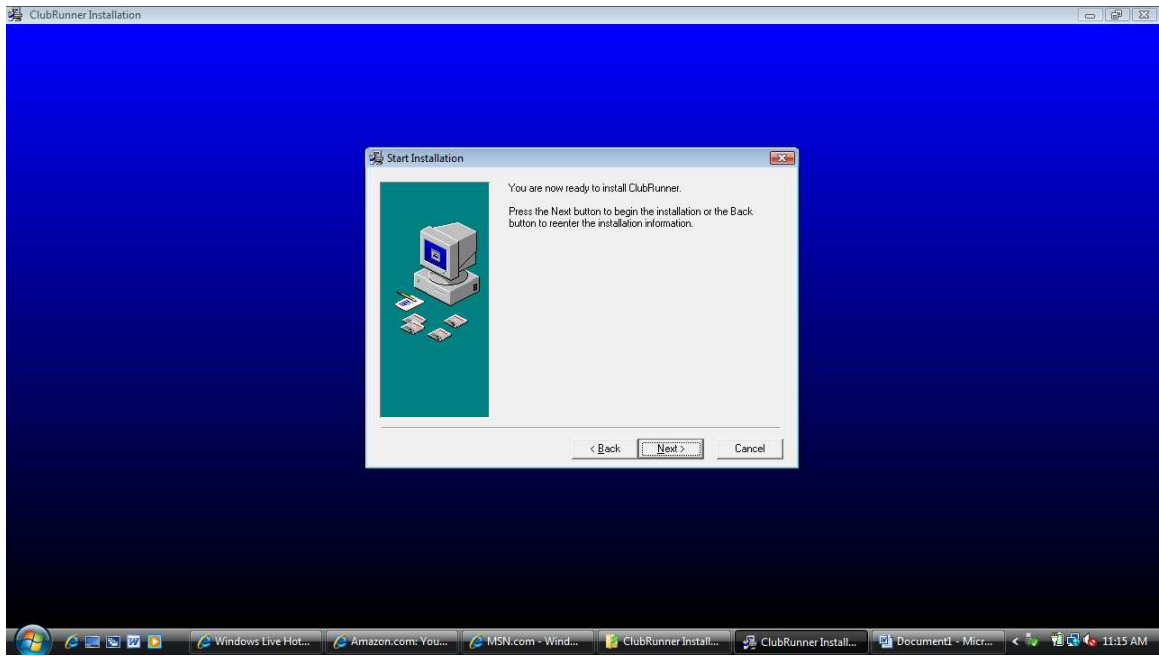
b. Select Next.



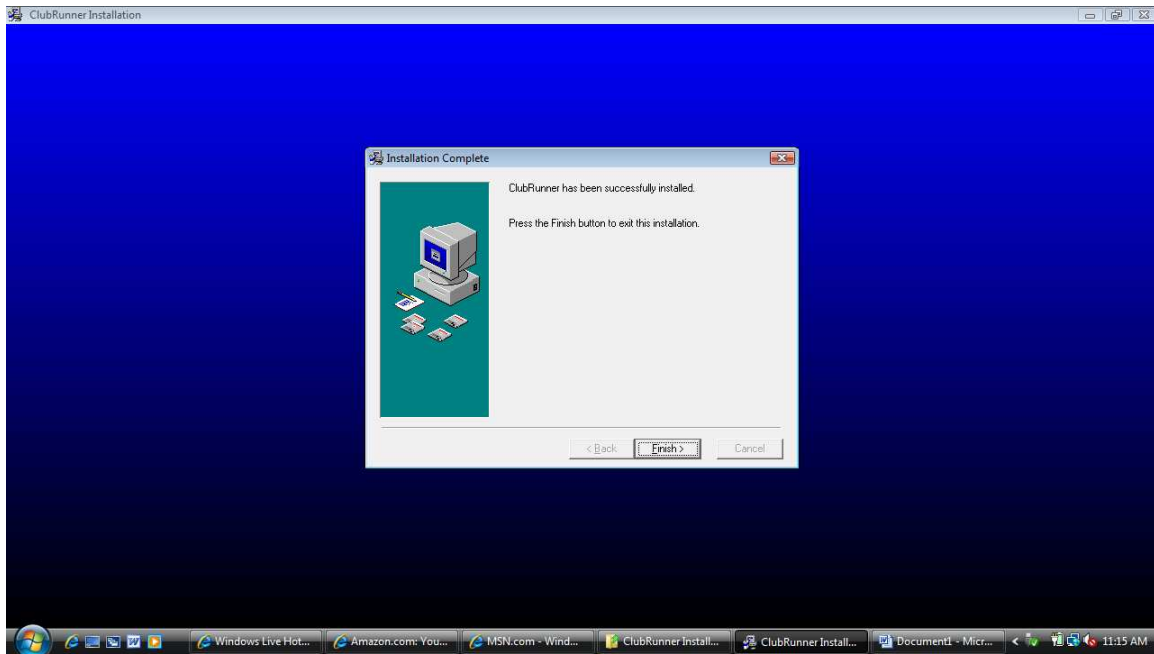
- c. If the computer you are installing Clubrunner on is not the server, keep the selection as is and select Next. However, if the computer is the server, click in the box for ClubRunner Server for Windows.



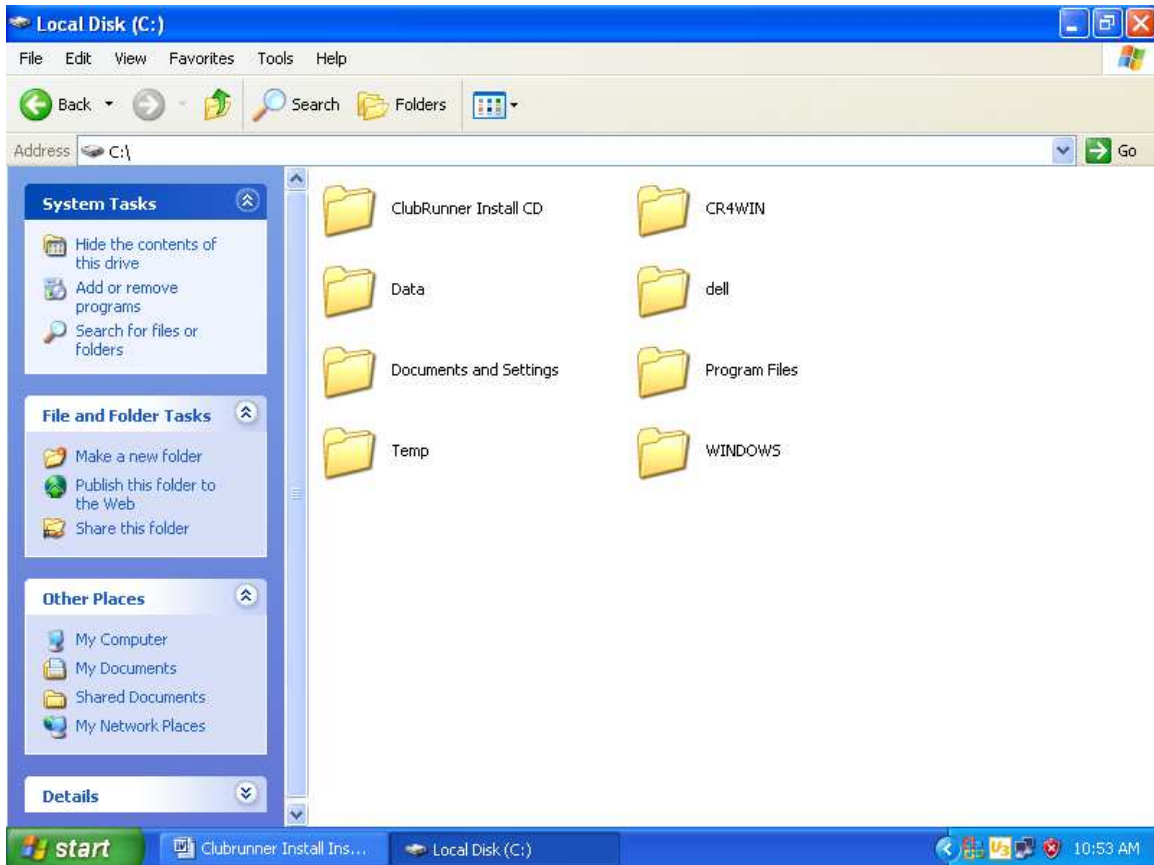
d. Select Next.



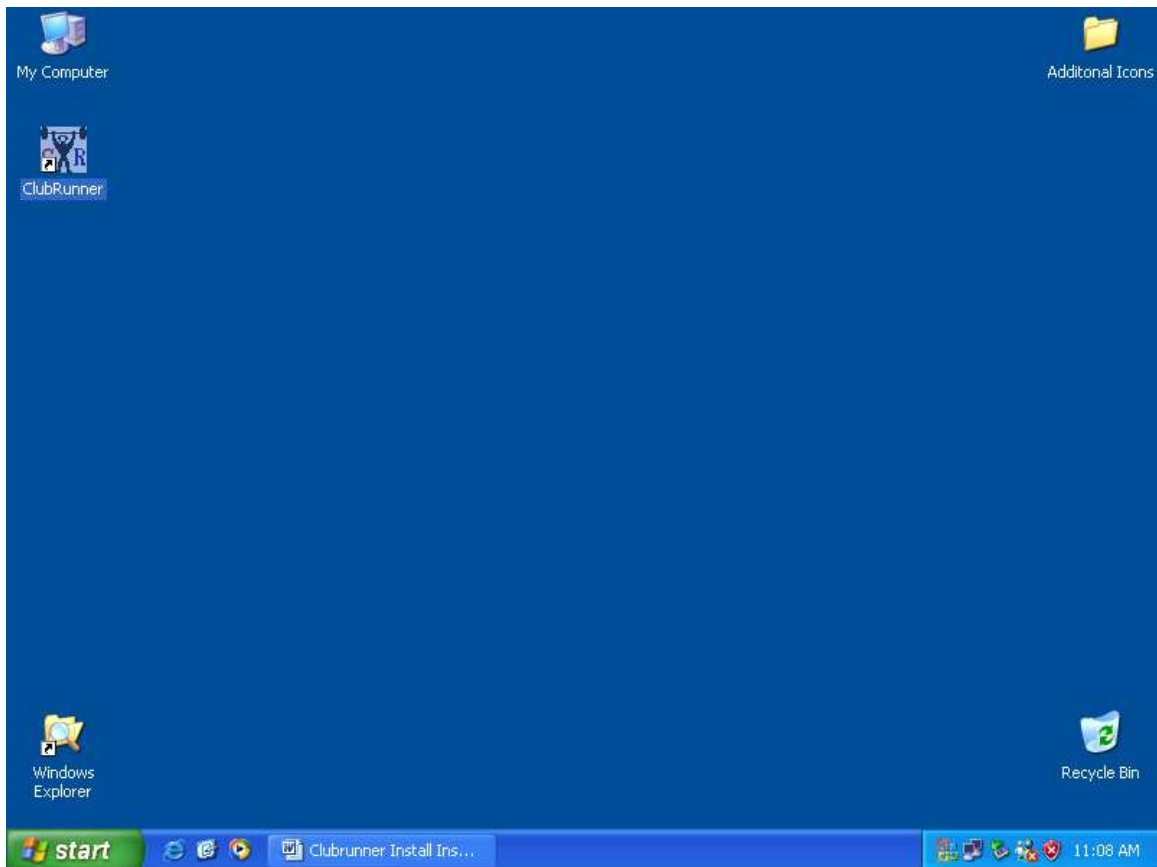
e. Select Finish. ClubRunner is now installed.



2. Create a folder off the C: drive called ClubRunner Install CD. Copy the entire contents of the the ClubRunner Install CD folder on the thumb drive to the ClubRunner Install CD folder on the C: drive. Remove the thumb drive.

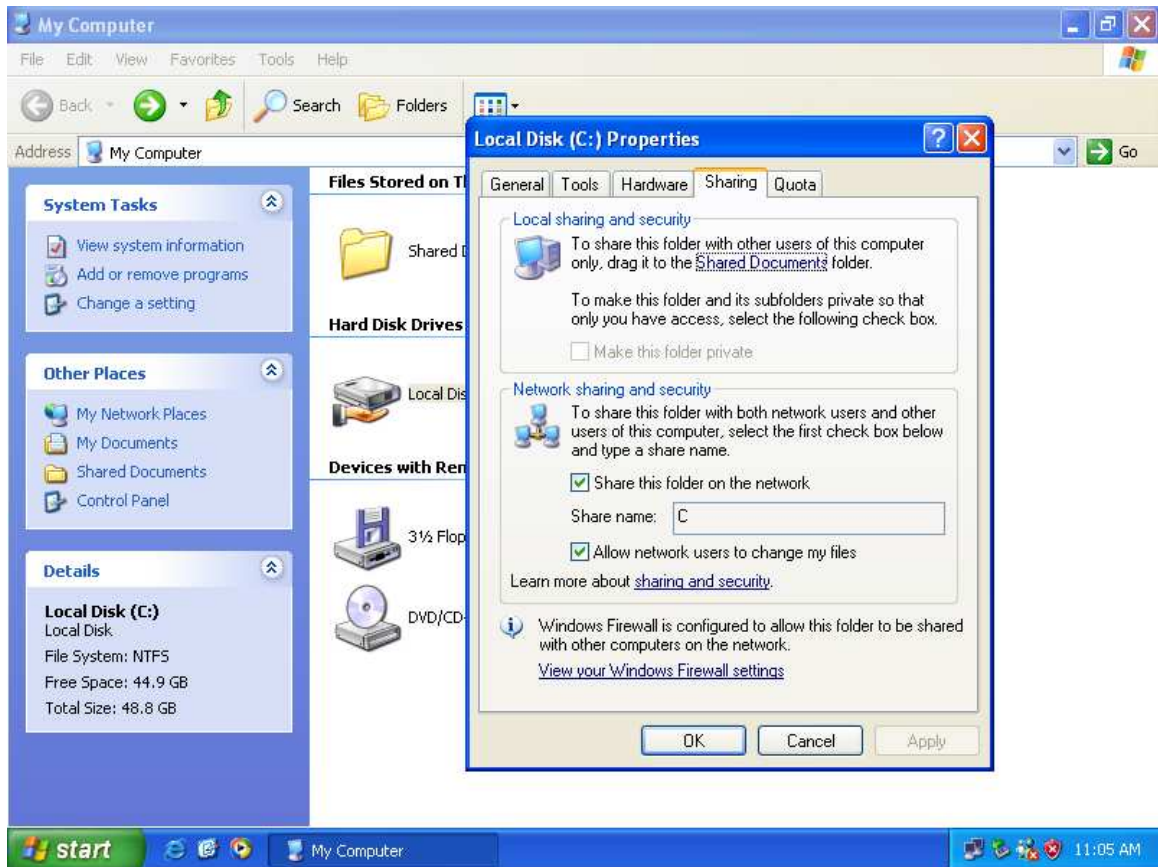


3. Create a shortcut on the desktop for Clubrunner by migrating to the C:\Program Files\CR4WIN folder. Right click on the cr4win.exe file and Send To Desktop (Create Shortcut). Rename shortcut to display ClubRunner.

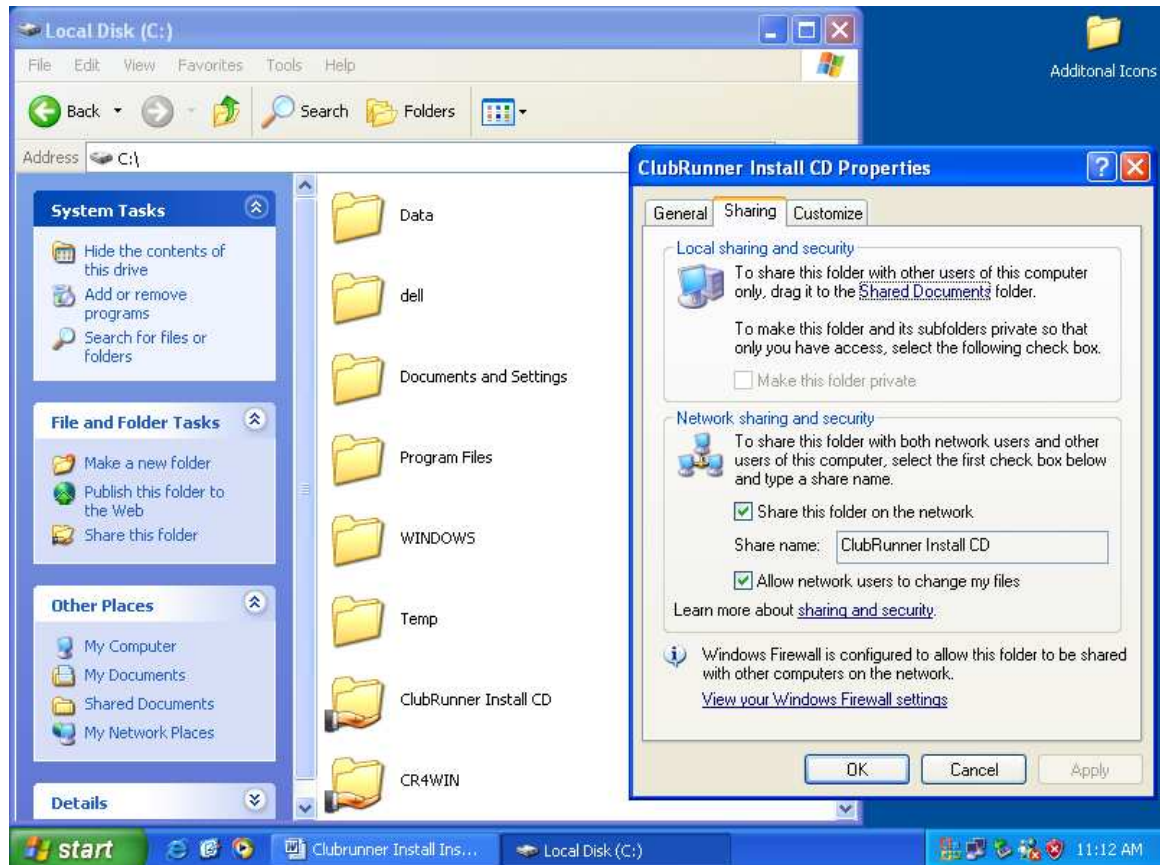




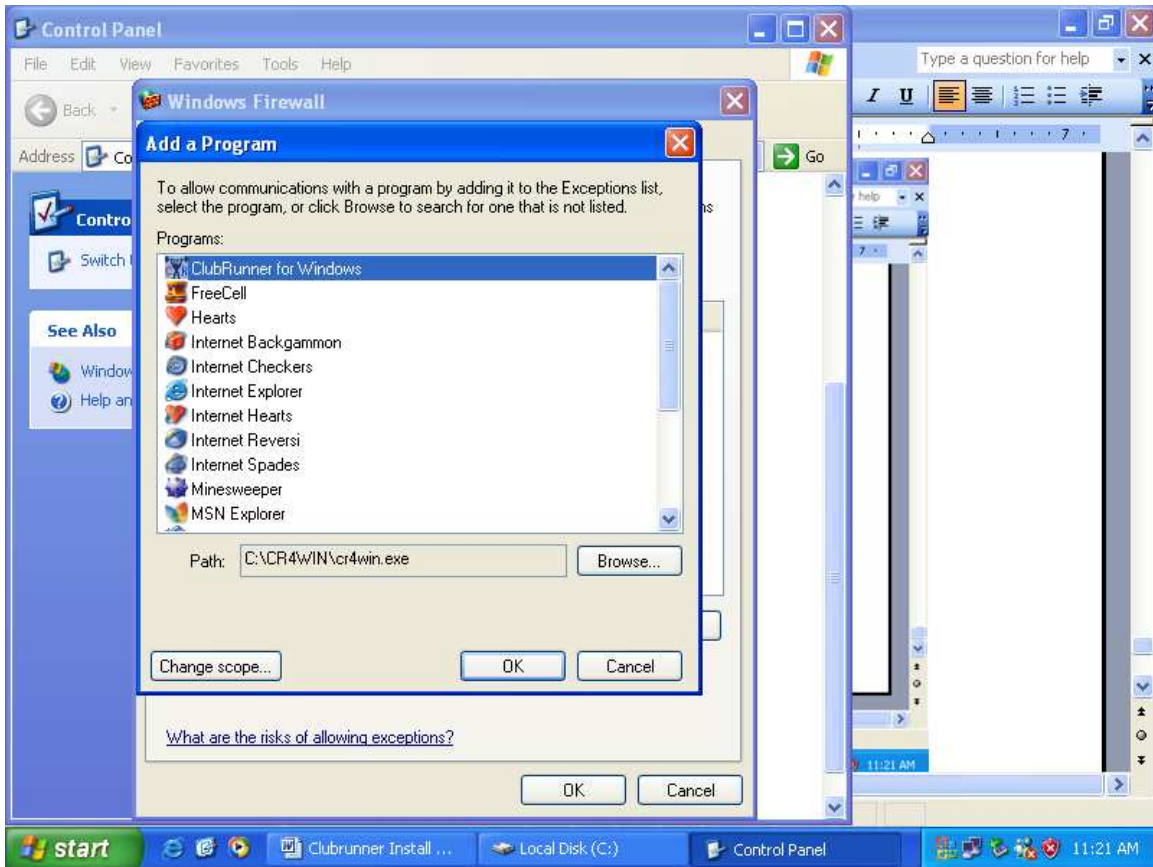
#### 4. Share entire C Drive. (Full Rights)

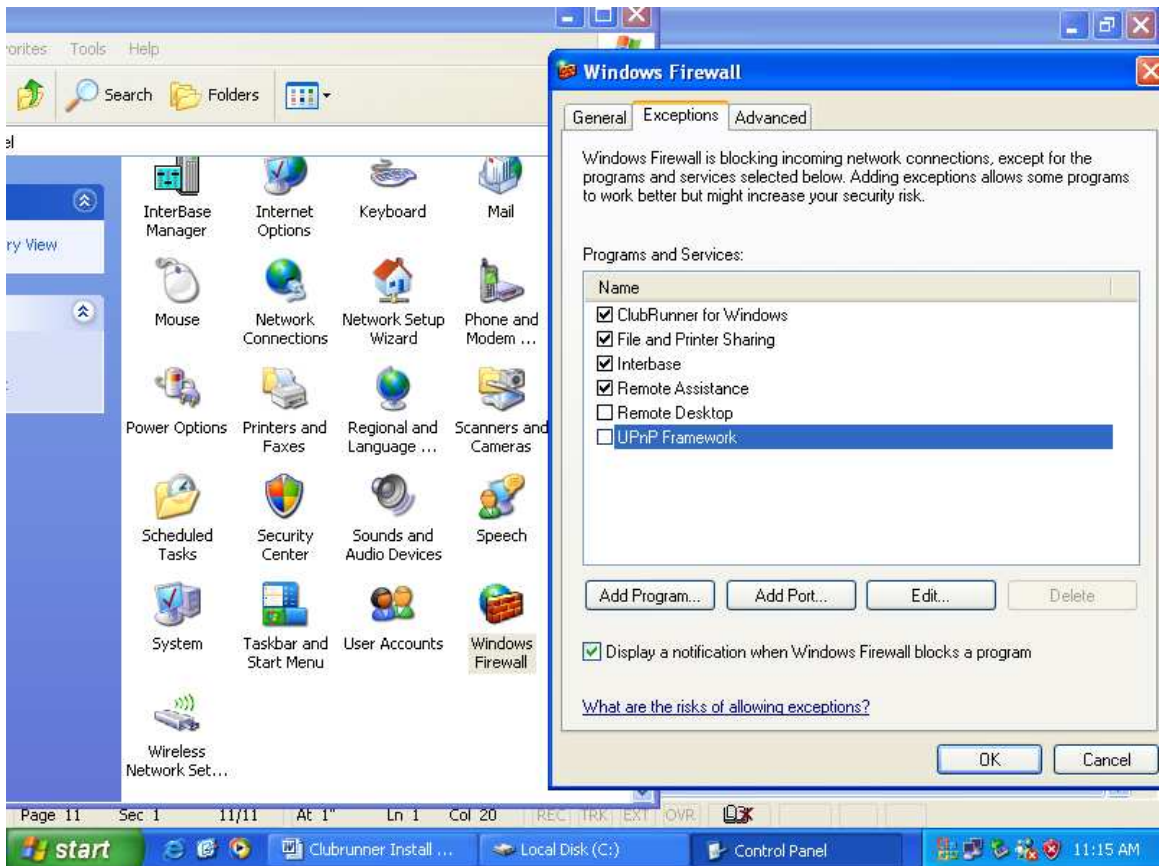


5. Make CR4WIN and the ClubRunner Install CD folders fully sharable.

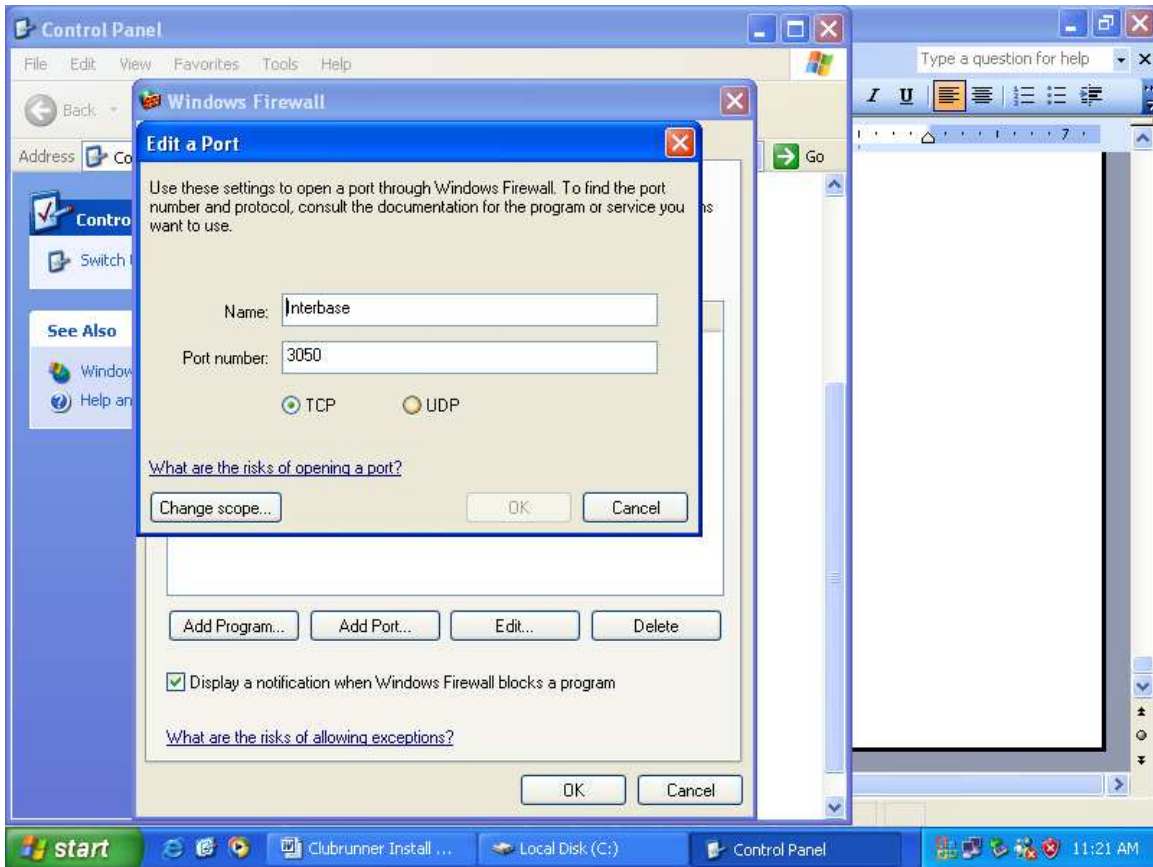


6. Turn on Firewall and Create Exceptions. From the control panel, select Windows Firewall. Turn on Firewall. Under the exceptions tab, select add a program. Find CluRunner for Windows.

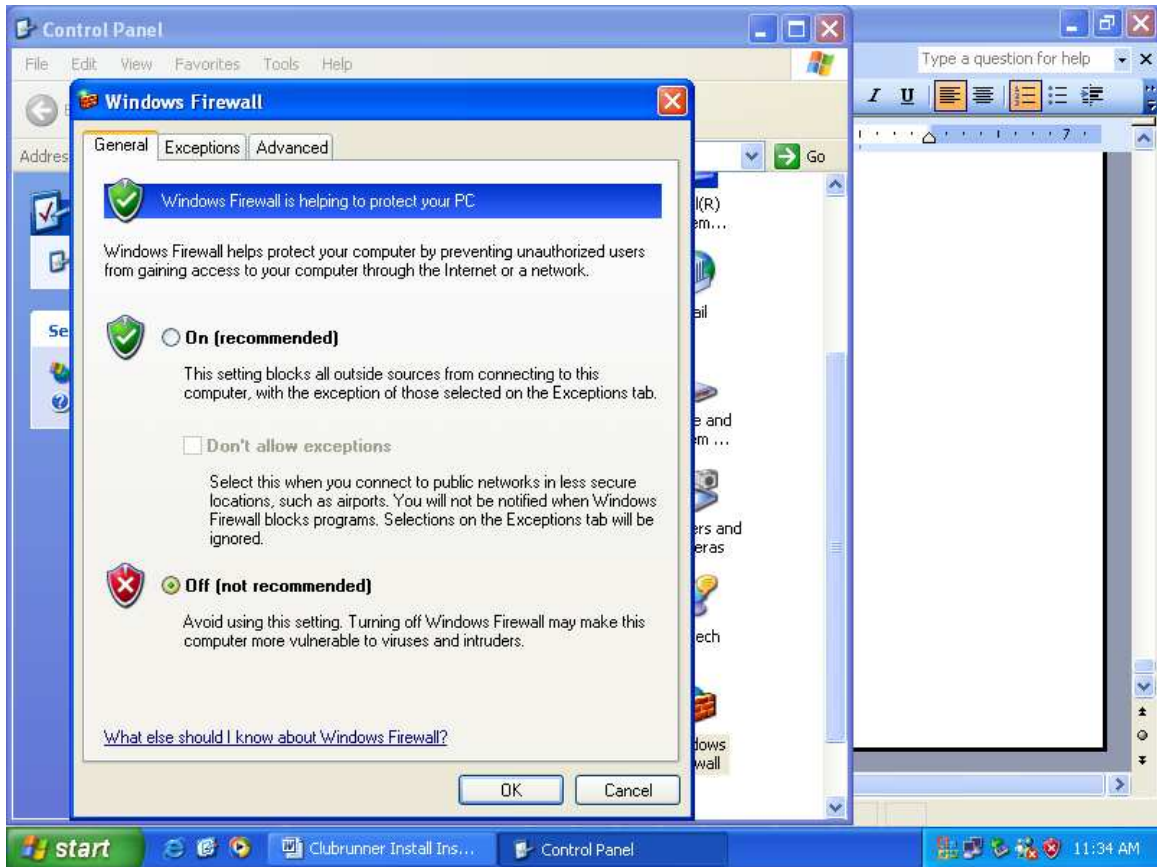




7. After Clubrunner has added, select Add a Port. This is for Interbase to work. Name: Interbase. Port: 3050. Click Ok.



8. Turn off Firewall. Go back into the Control Panel and select Windows Firewall. Select Off.

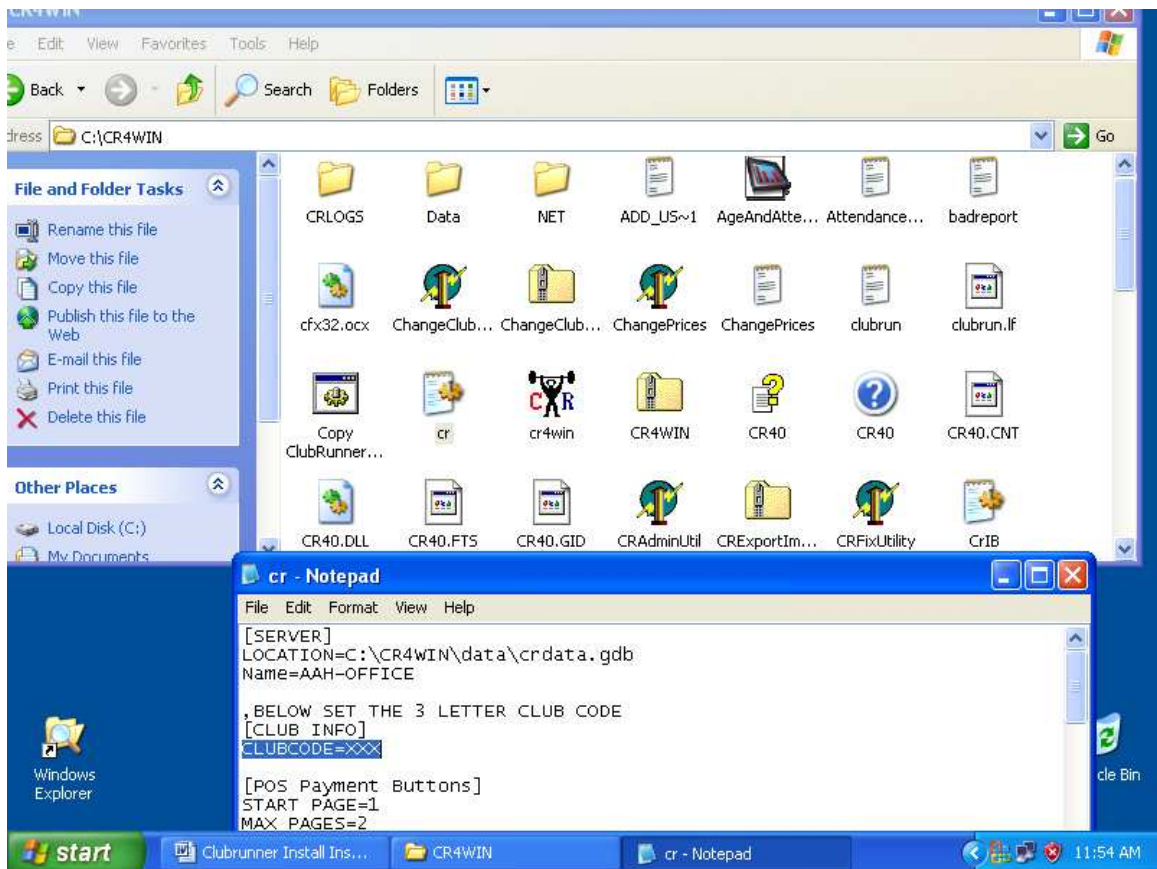


## 9. Setup IBConsole

- a. Go to the CR4WIN folder
- b. Doubleclick the IB Console icon
- c. Add the server Interbase
- d. Doubleclick on Servers
- e. Description: Local Server Username: Sysdba Password:  
masterkey Click Ok.
- f. Register Database.  
Expand  
Highlight Database  
Select Register  
Find Database CRDATA.GDB  
Click Ok
- g. Add another logon  
Go to Server tab  
Go to User Security  
New  
Username: Clubrun  
Password: SJS  
Apply  
Hit Close  
Go back to Local Server  
Logout  
Log back in  
Username: Clubrun  
Password: SJS  
Doubleclick on Database  
Doubleclick on Properties  
Forced Writes – Select Enabled  
Apply  
Ok

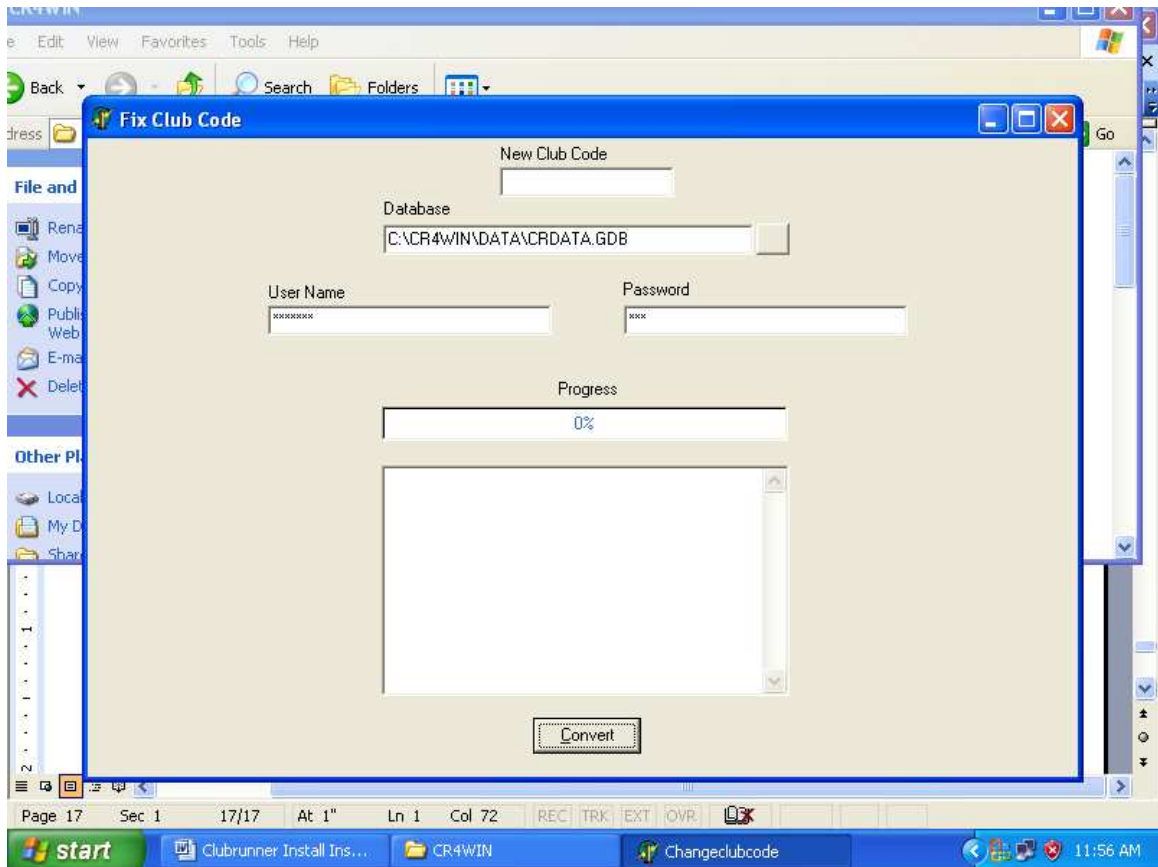


10. Edit CR.INI file. Migrate to the c:\cr4win folder and open the cr.ini file. The default clubcode is set to XXX. Change XXX to the club code your setting up. Example: Clubcode=AAH





11. Change Club Code. Run Change Club Code for the C:\CR4WIN folder. The new club code is the three letter code of the club you are setting up. Example: AAH



Fixed Club Code: Name of the club that is being built on the machine.

Multi Code is AAA. AAA is the default

After the conversion, the message Process Complete will be displayed.

Start ClubRunner

Comp ID – call the server XXXServer - XXX being the club code. (AAHServer)

Click Ok.

12. Contact Clubrunner support. When starting clubrunner you'll receive this computer is not authorized. You will need to acquire licenses from Clubrunner support.

13. Removal of extra computer names. Run PCID from the CR4WIN folder. Select Check / Add PCID. Verify it's the correct server name. Then select the icon with the red arrow. This will search for all computer names. When completed, highlight the name(s) to get rid of. Select delete. When asked which server name to replace, enter the server name that you verified above.