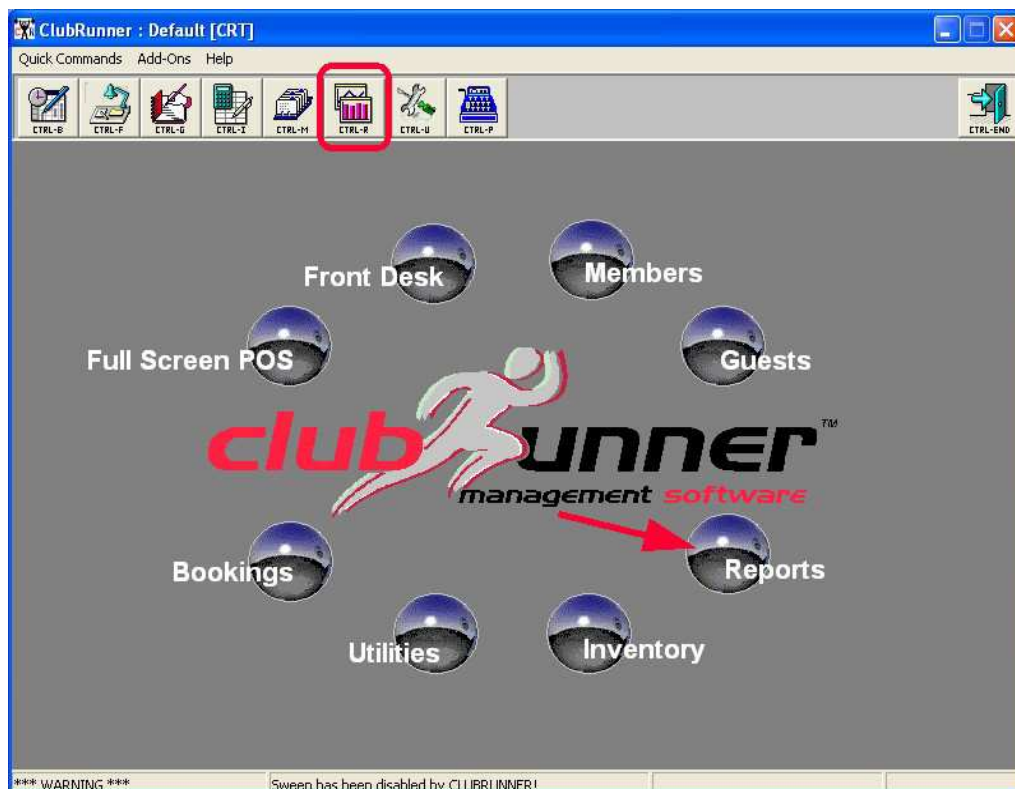
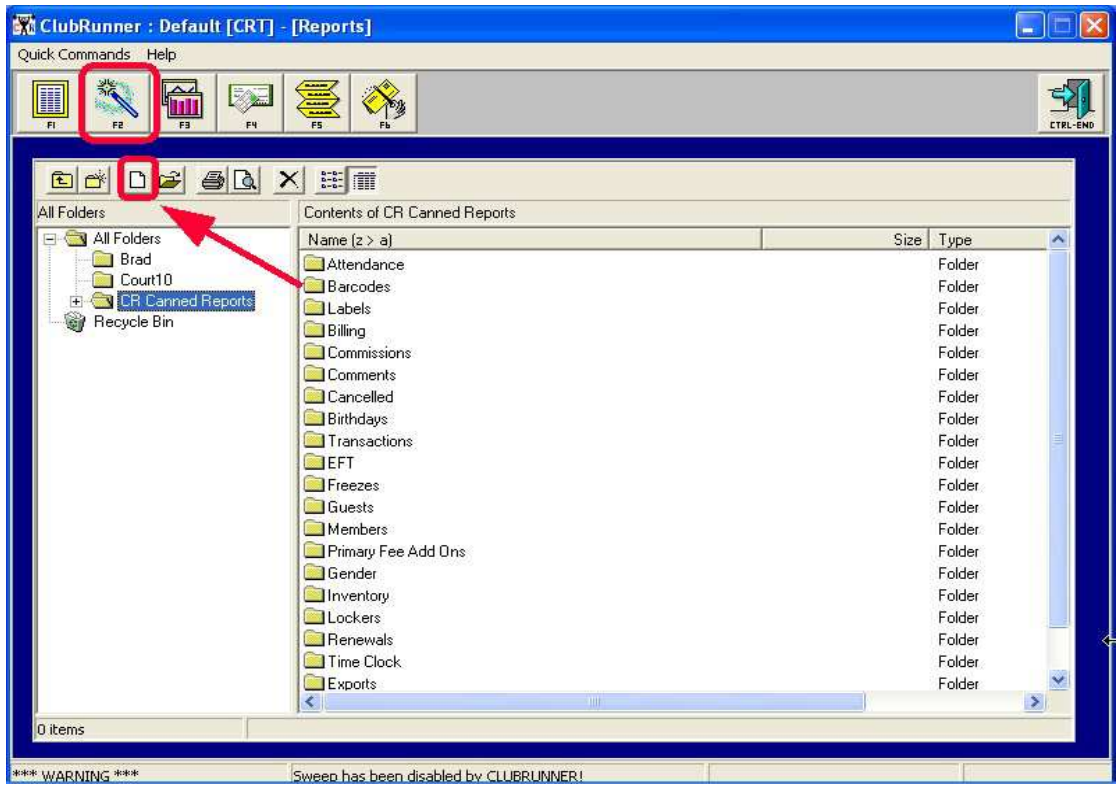


I attached a report that should work for you. Download the attachment to the Server's CR4WIN folder & follow the instructions below...

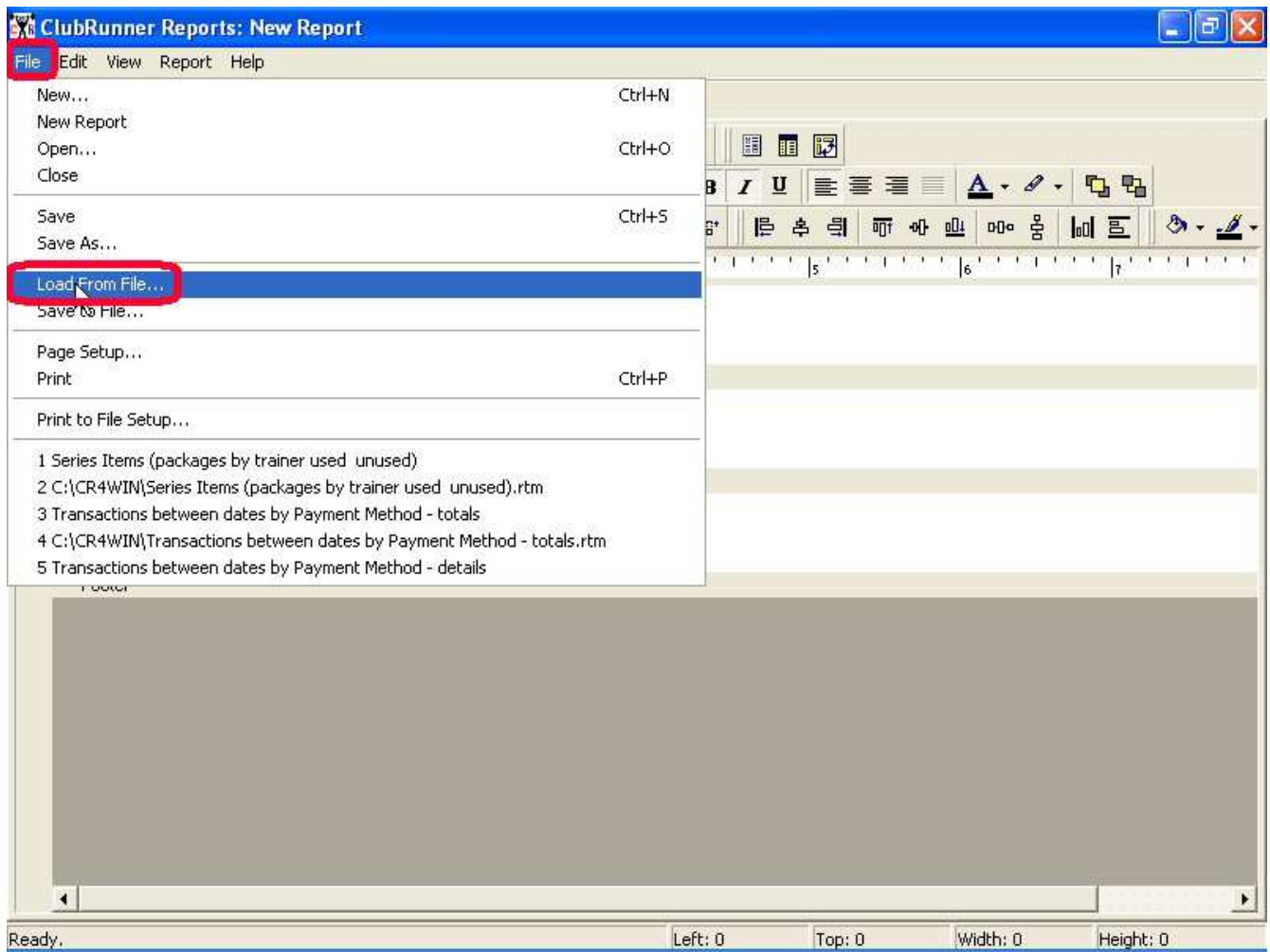
From the Main Menu, go into reports...



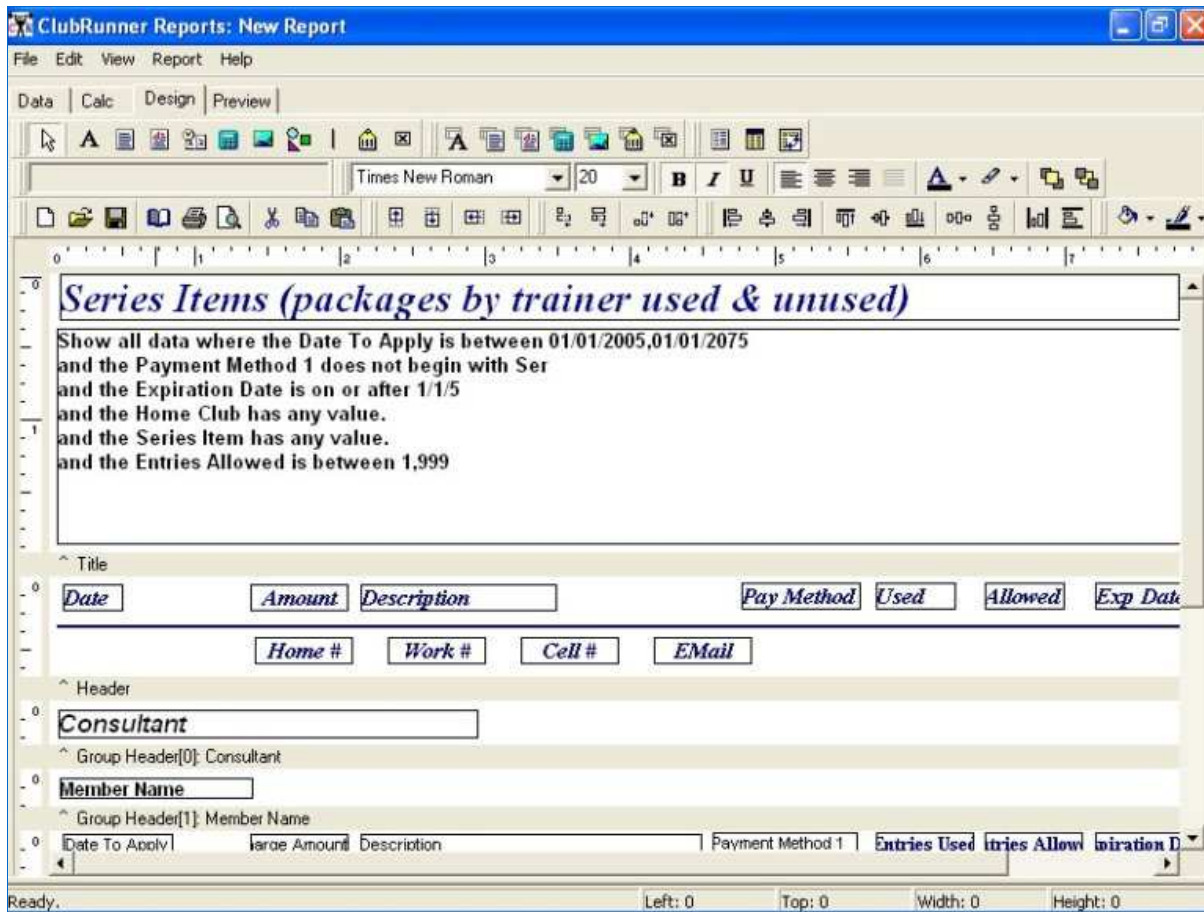
Go to your reports, the F2 wizard and click on the "New Report" button...



Go to the File Menu and click "Load from File"...



Browse and find your file where you saved it (hopefully the Server's CR4Win folder). Select the report and it will load on to the Design Tab.



[View full size](#)

Now, select File Menu and then Save As. Name & Save the report in one of your report folders...

Jeff Colen  
ClubRunner