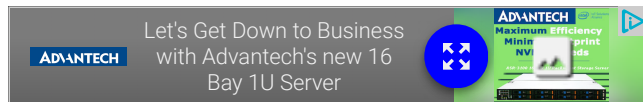


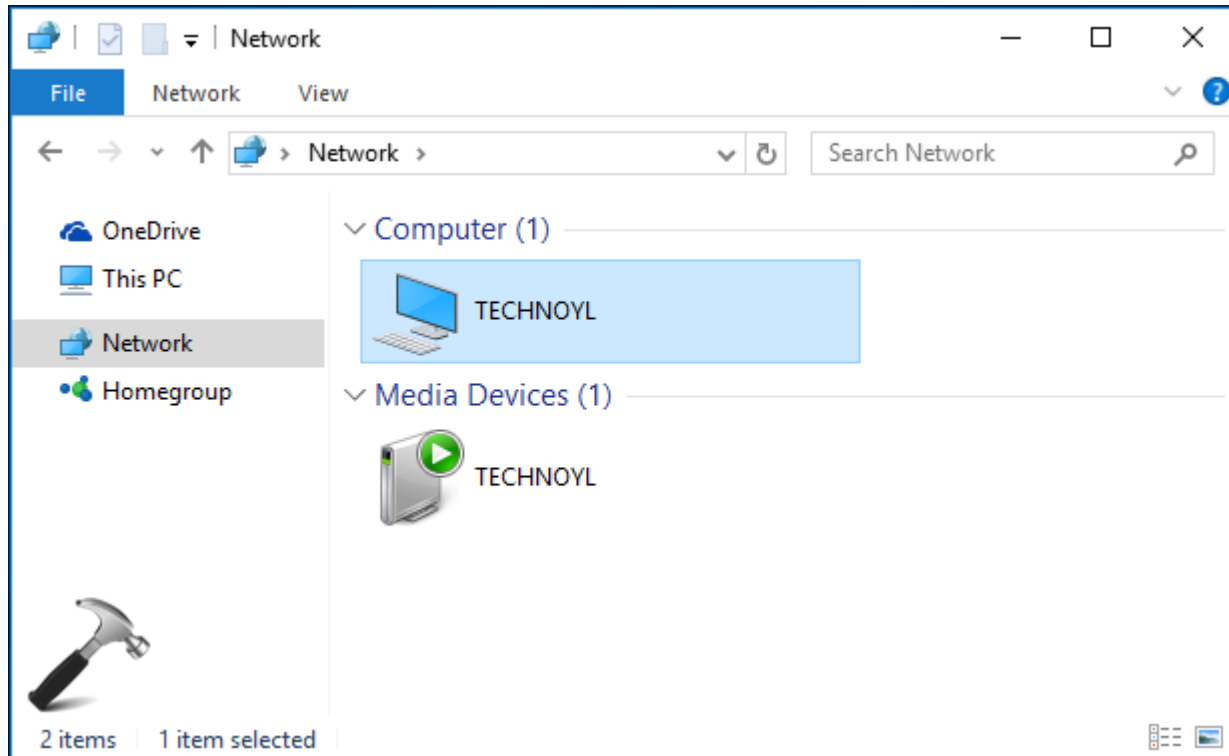
[How To] Turn Off Password Protected Sharing In Windows 10



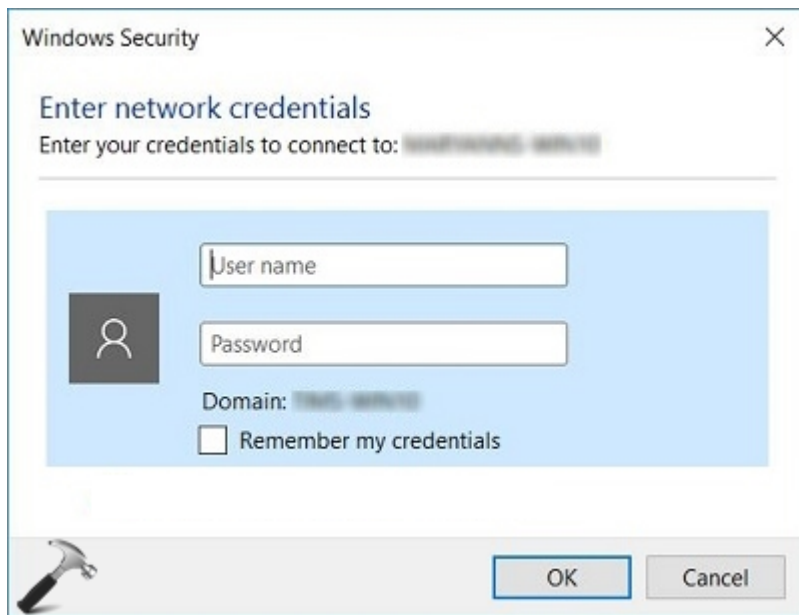
Published: June 7, 2016 | Applies to: How To (<https://www.kapilarya.com/category/how-to>), Windows 10 (<https://www.kapilarya.com/category/windows-10>)

This guide will show how to turn off password protected sharing in Windows 10, so that trusted users on your system can access shared data easily.

Password protected sharing is a networking based feature in *Windows*, with which you can allow or block other users on your system to access shared files, printers and public folders. By default, this feature is turned on and someone else having an user account on your system can go to *Network* pane in the [File Explorer](#), to access the shared data.



As I said that the password protected sharing is on by default, you'll be asked to enter your credentials while accessing shared data:

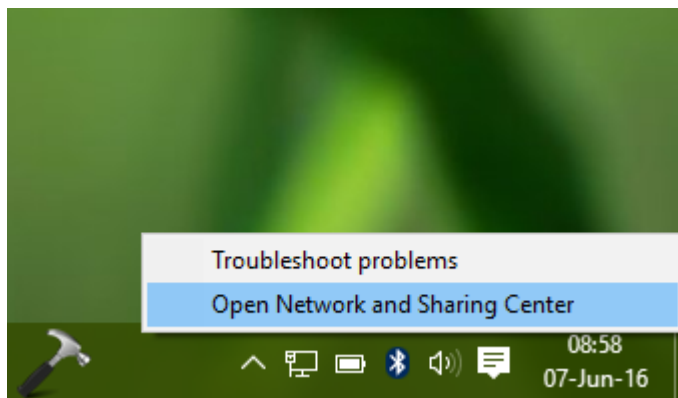


Now if in your case, all the other members on your system are worth trusting and you do not want to let *Windows* ask them credentials each time they access shared data, you can turn off password protected sharing for them. There are two methods for it, discussed below. You should be an administrator of your machine to follow them.

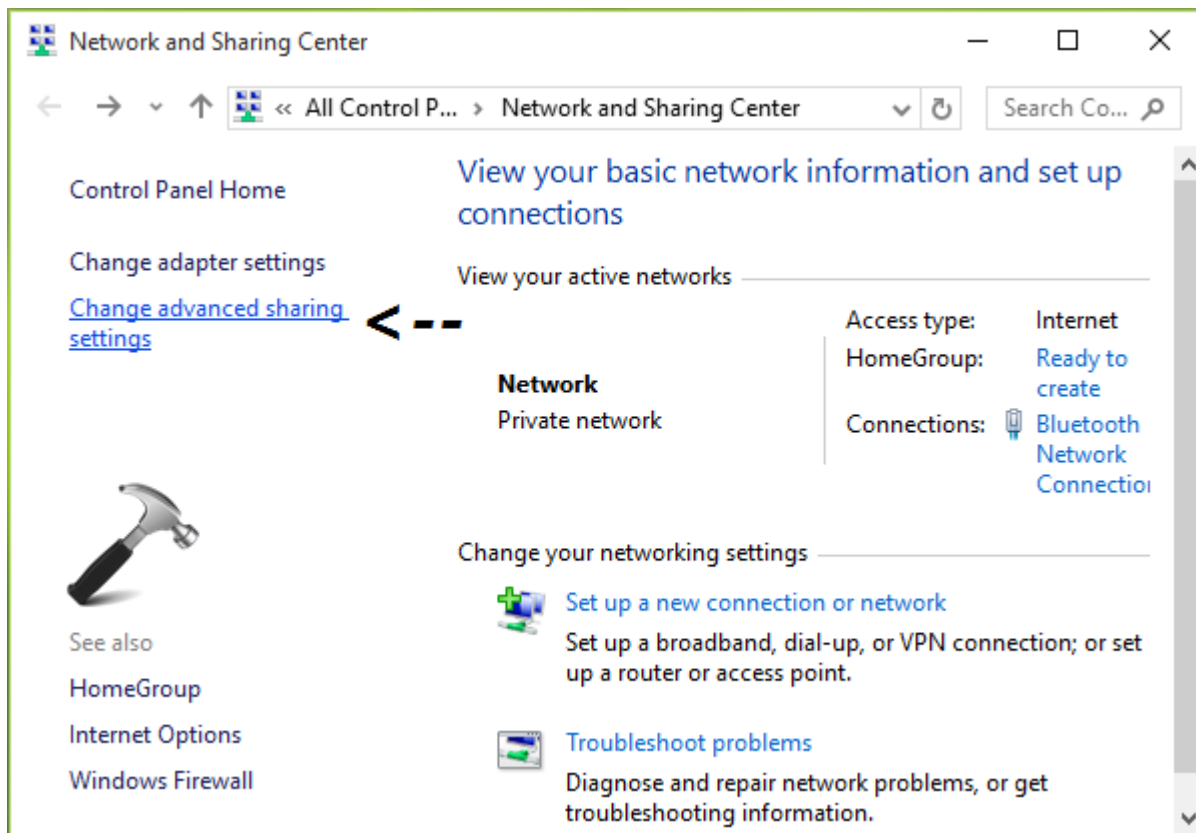
How To Turn Off Password Protected Sharing In Windows 10

Method 1 – Via Control Panel/Network And Sharing Center

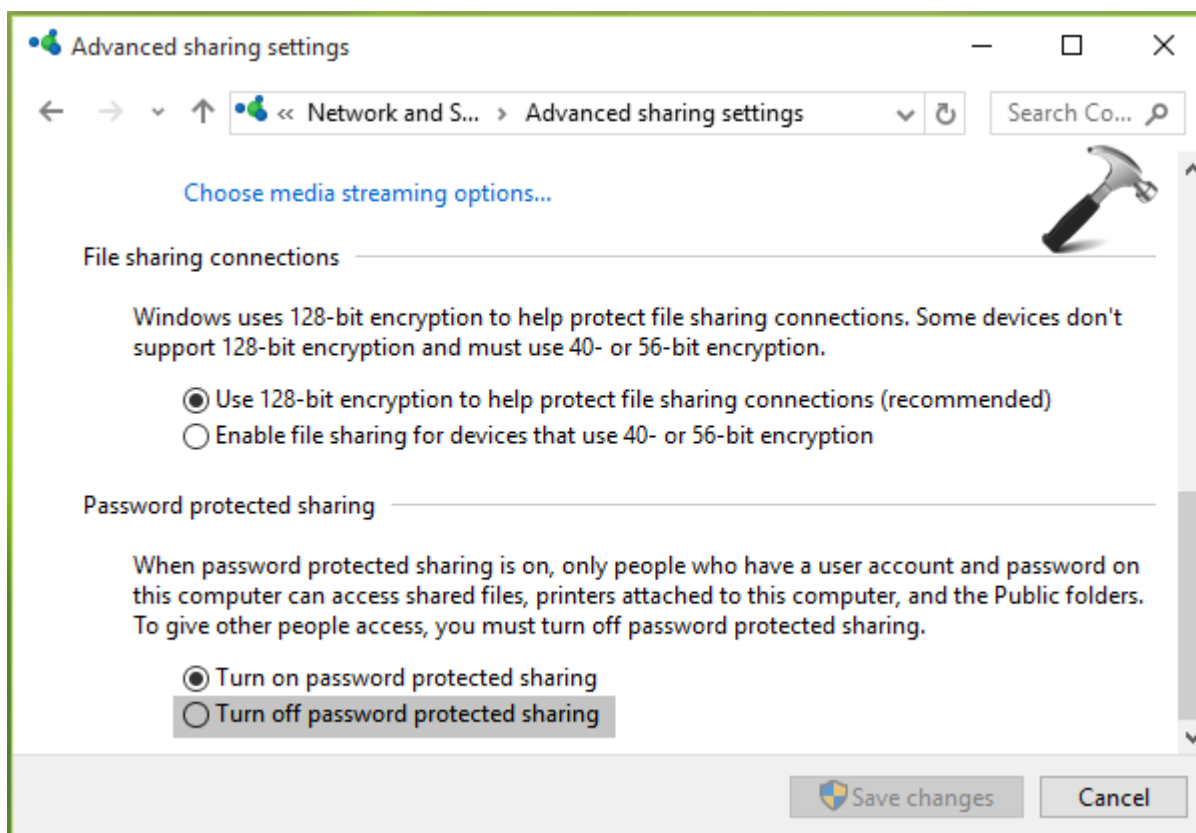
1. Right click on the network icon in taskbar notifications area and select **Open Network and Sharing Center.**



2. In the *Network and Sharing Center* window, click **Change advanced sharing [settings](#) link as shown below.**



3. Then in *Advanced sharing settings* window scroll down and expand **All Networks**. You'll then find *Password protected* sharing heading. Under it, select **Turn off password protected sharing** option and click **Save Changes**.

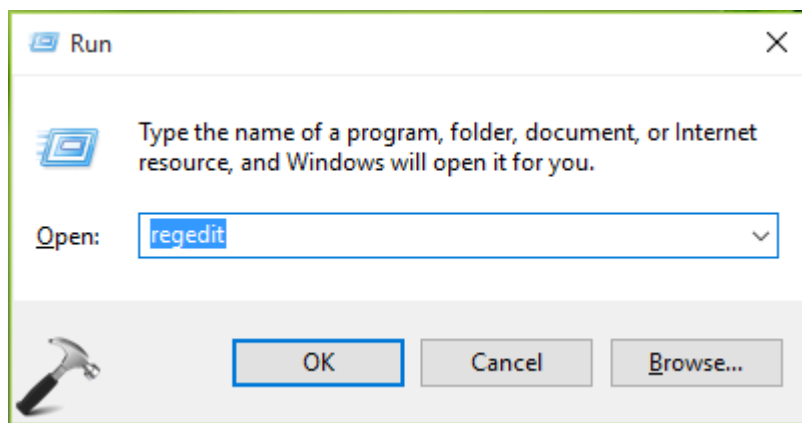


You can now reboot your system and password protected sharing will be turned off after restarting your system. In case if the same doesn't happens, you need to turn off password protected sharing by tweaking registry, which is mentioned in *Method 2*.

Method 2 – Using Registry Editor

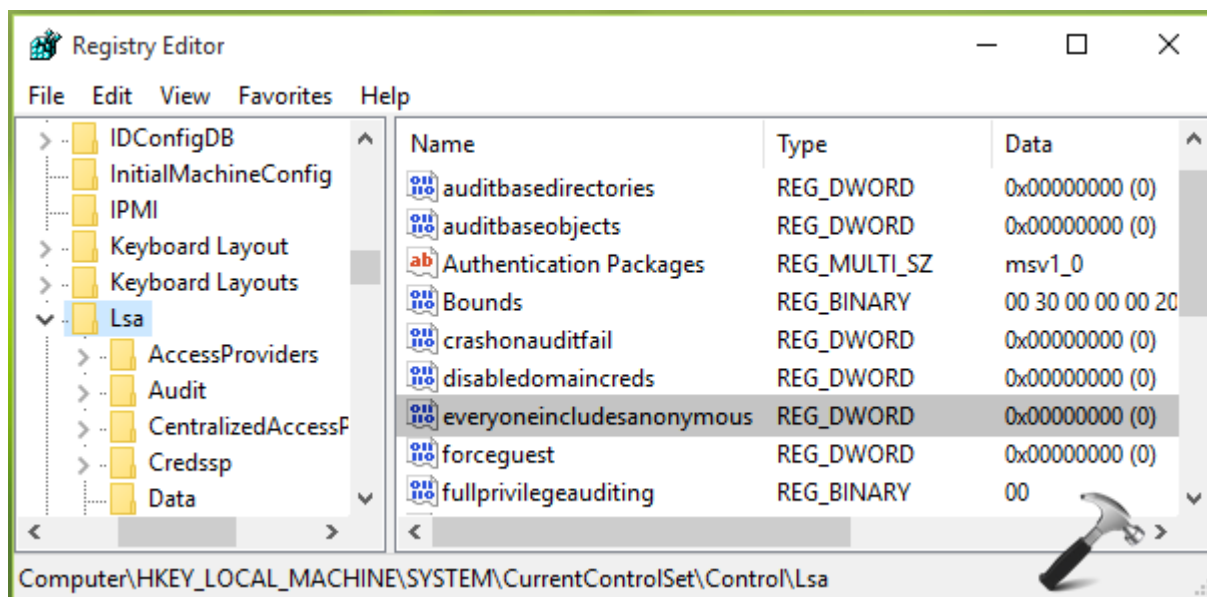
Registry Disclaimer: The further steps will involve registry manipulation. Making mistakes while manipulating registry could affect your system adversely. So be careful while editing registry entries and create a *System Restore* point (<https://www.kapilarya.com/configure-and-use-system-restore-in-windows-10>) first.

1. Press **Windows + R** and put **regedit** in **Run** dialog box to open *Registry Editor* (if you're not familiar with *Registry Editor*, then click **here** (<https://www.kapilarya.com/regedit>)). Click **OK**.

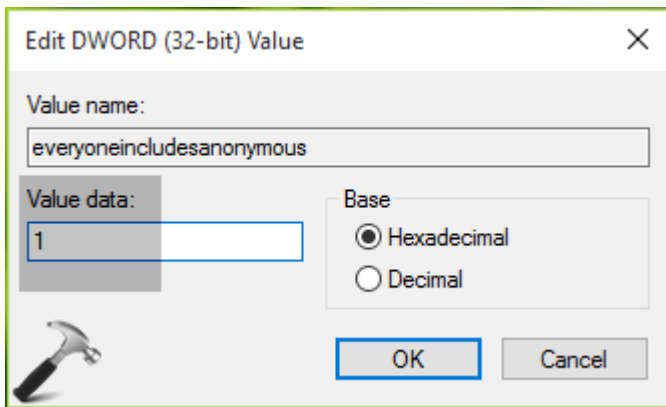


2. In the *left* pane of *Registry Editor*, navigate to following registry key:

HKEY_LOCAL_MACHINE\SYSTEM\CurrentControlSet\Control\Lsa

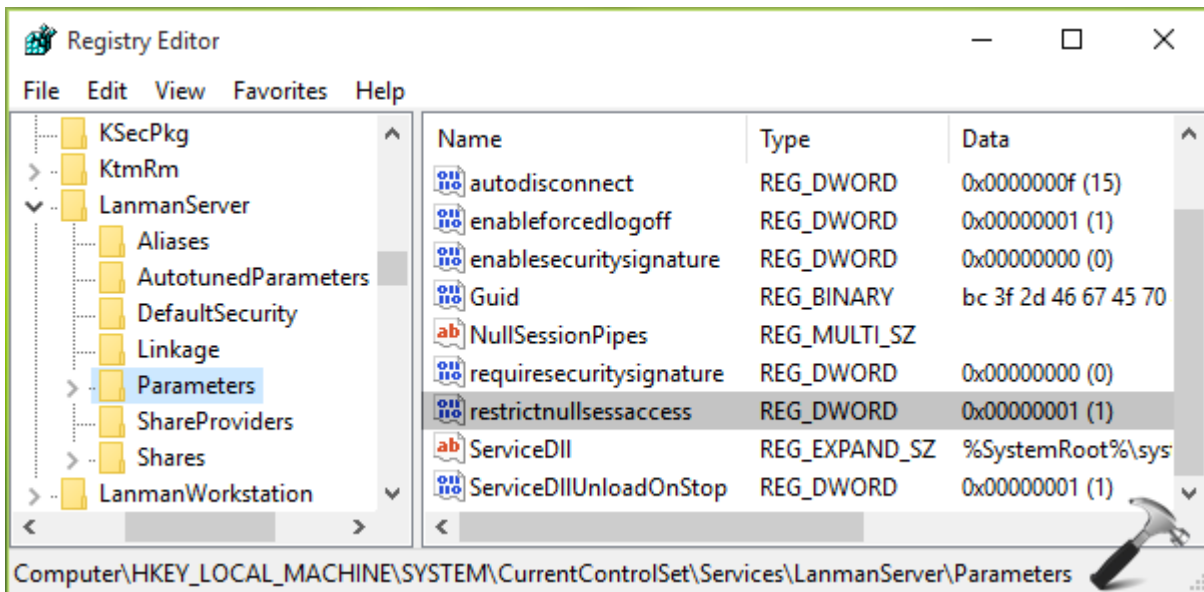


3. In the right pane of **Lsa** key, look for registry *DWORD* (*REG_DWORD*) named **everyoneincludesanonymous** which might have value set to 0. Double click on it to change the value.

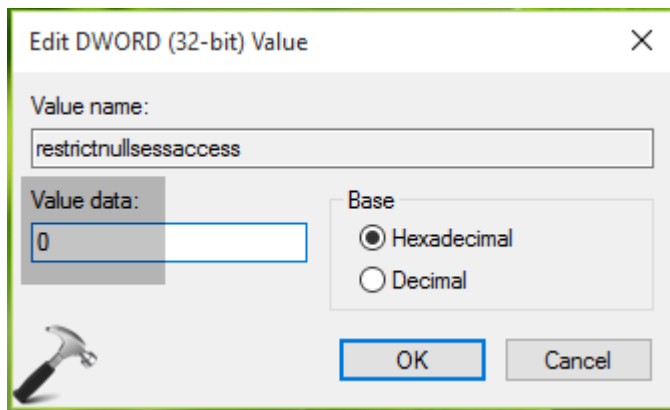


4. Now modify the *Value data* in *Edit DWORD Value* box and set it to **1**. Click **OK**. Then navigate to following registry location:

HKEY_LOCAL_MACHINE\SYSTEM\CurrentControlSet\Services\LanmanServer\Parameters



5. Lastly, in the right pane of **Parameters** key, set the registry *DWORD* (*REG_DWORD*) named **restrictnullsessaccess** from 1 to 0. Close the *Registry Editor* and reboot.

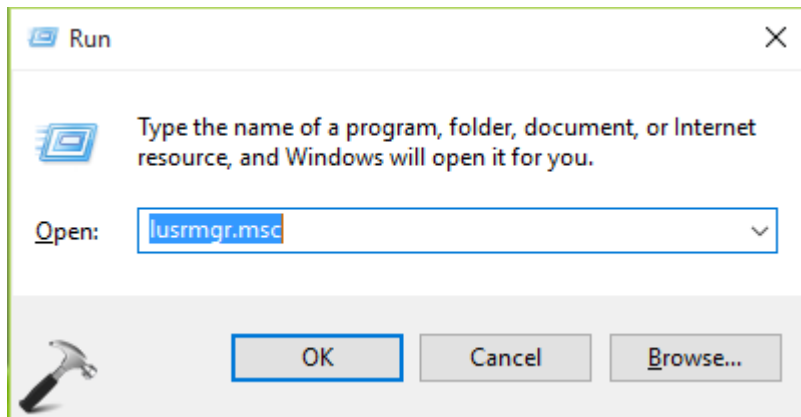


After reboot, you'll find that password protected sharing is finally turned off.

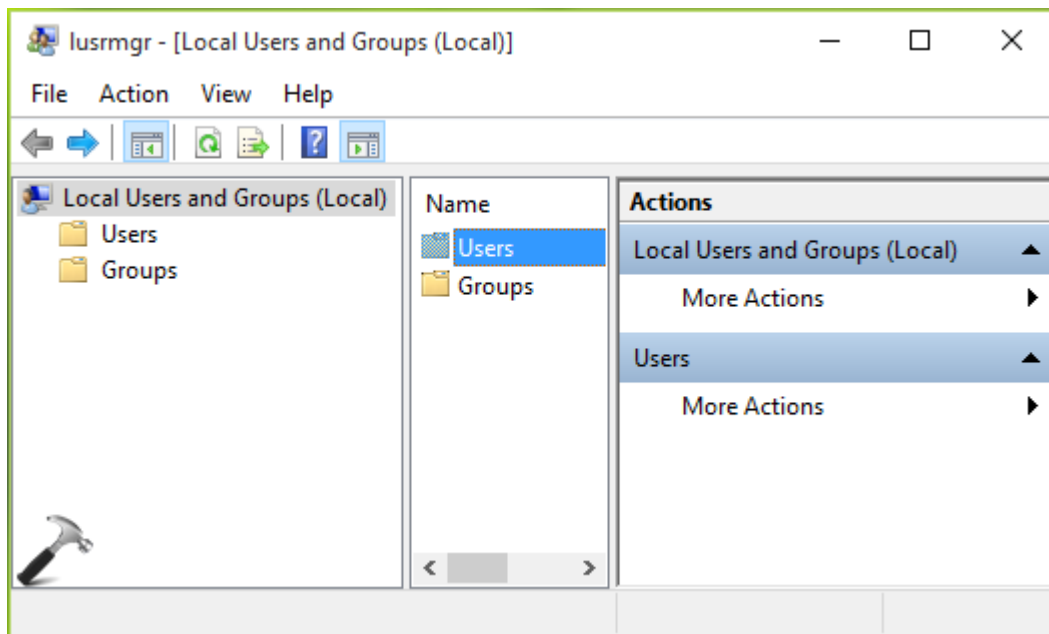
Method 3 – From Comments (UPDATED: Nov 27, 2016)

If you're on upgraded [Windows 10](#) Anniversary Update or later, above mentioned methods may not work for you. Our reader "**Kissache**" has shared an alternative method that you can use in this case.

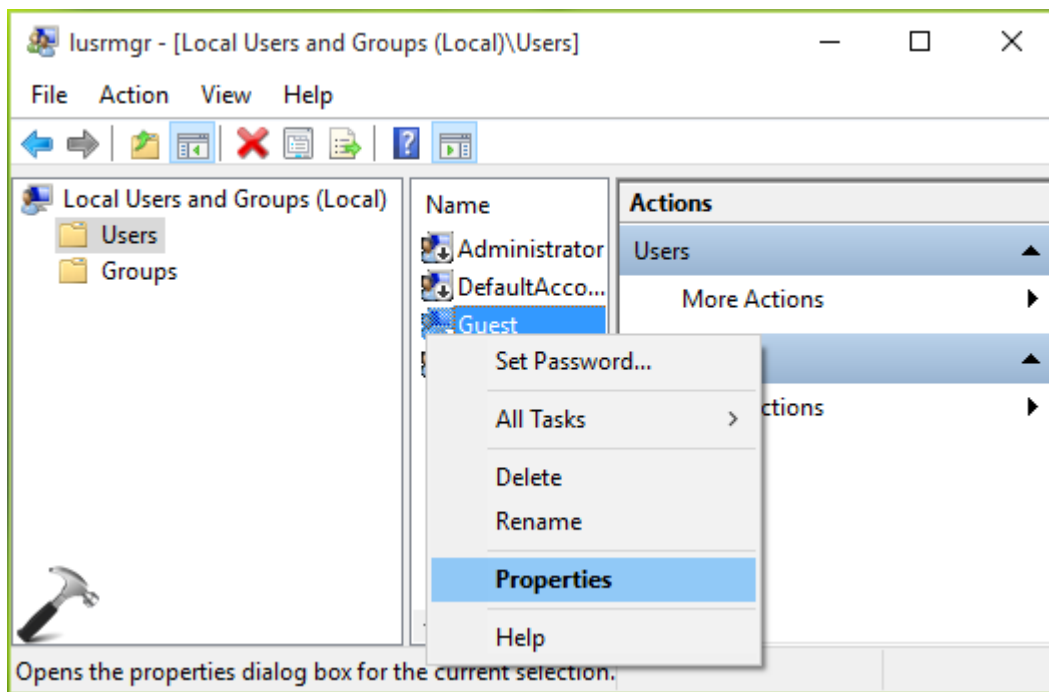
1. Press **Windows** + **R** and type **lusrmgr.msc** into *Run* dialog box, click/tap **OK** to open *Local Users and Groups* snap-in.



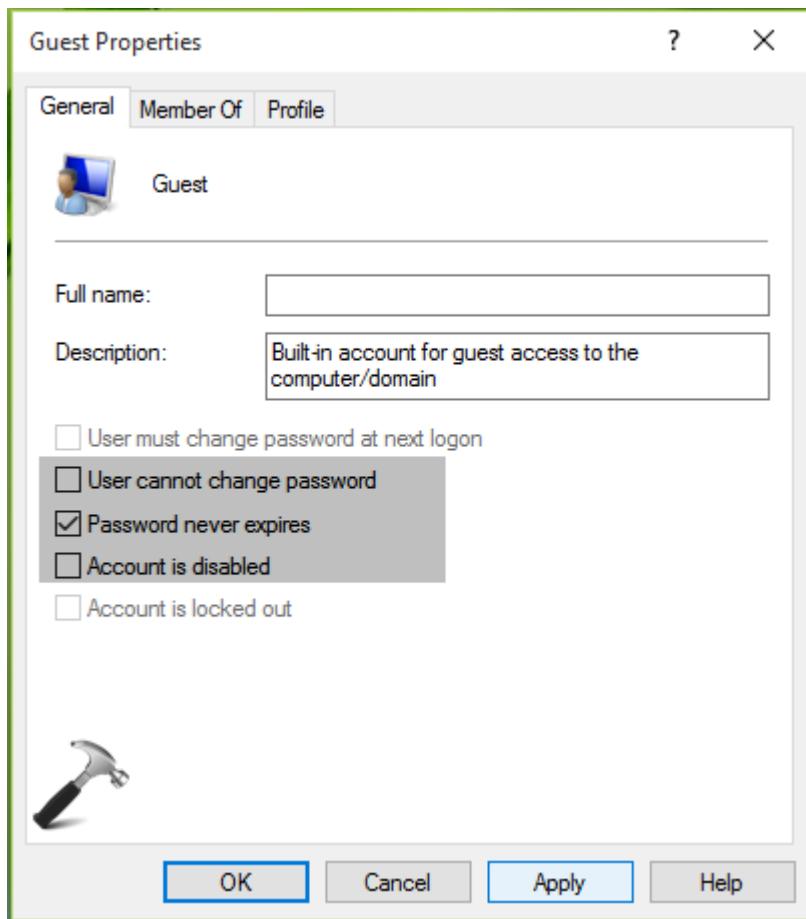
2. In next window, click **Users**.



3. Moving on, then right click **Guest** and select **Properties**.



4. Finally in *Guest property sheet*, check **Password never expires** and uncheck other options present there. Click **Apply** followed by **OK**.



Reboot, and *Password Protected sharing* should be turned off.

That's it!

37 Comments